

EVERGREEN™
Water-Cooled Chillers



Turn to the Experts.™



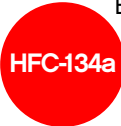


The Carrier-designed Evergreen™ family of chillers enables chiller plants to achieve superior efficiency at true operating conditions without compromising the environment. Our family of Evergreen chillers alleviates owners' concerns over scheduled refrigerant phaseout. Carrier Evergreen chillers have the lowest published leak rate in the industry and the ability to store the entire charge of refrigerant inside the chiller minimizes the chance of leaks during refrigerant transfer. With environmentally sound refrigerant, superior efficiency and powerful controls, these units are ideal for both new construction and replacement projects.



Environmental Leadership

Carrier has long been committed to the environment and its sustainability. Evergreen chillers provide our customers with a high-efficiency, chlorine-free, long-term solution, unaffected by refrigerant phaseout. Carrier's decision to utilize non-ozone-depleting HFC-134a refrigerant provides our customers with a safe and environmentally sound choice without compromising efficiency.



Reliability

Evergreen centrifugal chiller's simple, single-stage, positive-pressure compressor ensures superior reliability. Evergreen screw chillers have two independent refrigerant circuits that provide built-in redundancy for their owners. All Evergreen chillers are equipped with ASME-constructed heat exchangers, ensuring reliability. Carrier's hermetic motors operate in a clean-liquid, refrigerant-cooled environment. The hermetic design eliminates the potential for shaft seal leaks and refrigerant/oil loss. These are just some of the reasons why the Evergreen family of chillers has the industry's lowest leak rate.

EVERGREEN™ Water-Cooled Chillers
The Right Choice for Today and Tomorrow

Evergreen 19XR



Evergreen Advantage

Evergreen chillers can be shipped fully charged, minimizing start-up and maintenance time. Purge units are not required. The tight construction of Evergreen chillers ensures that contaminants stay out and efficiency is maintained throughout their life.



Efficiency

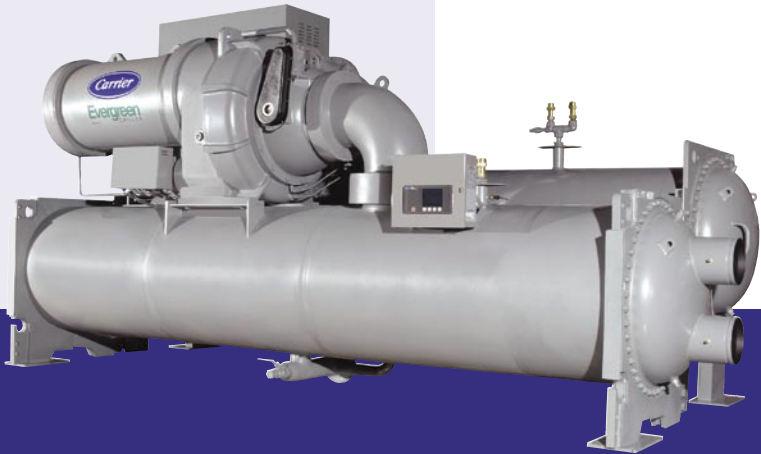
Today's owners demand high efficiency from their chilled-water plants. Chillers are typically specified at a design capacity (tons) for specific condenser water (85°F). It is a well-known fact that chillers operate at design conditions less than 1% of the time. As a result, superior part-load efficiency is required in today's chilled-water applications. The Evergreen centrifugal chiller, equipped with a factory-installed, variable-speed drive, maximizes chiller efficiency by optimizing compressor operation. Electric power consumption drops dramatically when the motor speed slows. The 19XRV delivers industry-leading Integrated Part-Load Values (IPLV).

Carrier's Evergreen chillers take superior advantage of off-design conditions. Evergreen chillers dramatically reduce power consumption at all building loads with a reduction in entering condenser water. Evergreen variable-speed centrifugals achieve superior savings for owners, even with constant building loads. When utilizing factory testing as part of a purchasing decision, centrifugal chillers operating at real-world conditions should be tested at real-world conditions.

The Right Level of Control

All Carrier Evergreen chillers come fully equipped with simple-to-use onboard controls, allowing users to easily monitor over 125 operating and diagnostic conditions in several languages. When coupled with a building management system, Evergreen's standard controls can be utilized to optimize a building's chilled-water system. Proper controls can be a key factor in meeting constantly changing building requirements in the most effective manner. Once equipment is selected for maximum efficiency, a chilled-water control system will both supervise and optimize the operation of your chilled-water plant. Our Carrier Comfort Network® (CCN) can consider all elements of the cooling operation, including cooling towers, pumps, variable frequency drives (VFDs), heat exchangers and the control valves used on the building's air handlers.

For all your comfort needs, Carrier has the right level of control.



19XR
■ Centrifugal
■ HFC-134a
■ 200 to 3,000 Ton



30HX
■ Screw
■ HFC-134a
■ 75 to 270 Ton



ComfortLink™ Navigator™
(CCN Component)

Selection Guide

Evergreen Water-Cooled Chillers	HFC-134a	Factory Charged	ASME Construction	Semi-hermetic Motor	Unit Mounted VFD
Screw	✓	✓	✓	✓	
75 to 270 Ton					
Centrifugal	✓	✓	✓	✓	✓
200 to 3,000 Ton					

Peace of Mind

Carrier's Evergreen centrifugal chillers are provided with a 0.1% leak-proof warranty*. Carrier provides coverage against refrigerant leaks for the first five years of ownership. For customers who have a service agreement with Carrier Commercial Service, Carrier will extend the warranty for the life of the chiller.

* For U.S. and Canada only. Warranty is not available in all other markets.

Benefits at a Glance

For Building Owners & Managers

- Reduces operating expenses
- Easy to maintain
- Quiet operation
- Reliable operation
- Environmentally sound refrigerant

For Consulting Engineers

- ASHRAE 90.1
- ARI certified
- HFC refrigerant
- High-efficiency optimization
- Ideal for replacement projects

For Contractors

- Easy to break down
- Ideal for replacement
- Diagnostic controls
- Reliable performance
- Reduces installation expenses

Turn to the Experts

Whatever your HVAC needs, from specifying and purchasing to installation and maintenance, Carrier has the solution. As the world leader in heating, ventilation and air conditioning, Carrier is committed to continually improving the quality of comfort for our customers.

From concept to finished product, your local Carrier sales representatives walk with you every step of the way. Whether you have one building, multiple sites nationwide, or special equipment and facility requirements, Carrier sales representatives will recommend a solution that fits your scope and budget.



Turn to the Experts.™

www.carrier.com
1-800-CARRIER

CARRIER CORPORATION ©2005

A member of the United Technologies Corporation family.
Stock symbol UTX. 04-819192-25

Manufacturer reserves the right to discontinue, or change at any time, specifications or designs, without notice or without incurring obligations.

